

4 Mill Cottages, Coldharbour
Uffculme, Cullompton, EX15 3EE

£235,000
Guide Price



 2  1  1 **EPC E**





- Character accommodation with high ceilings
- Spacious living/dining room
- Modern fitted kitchen
- Two generous double bedrooms
- Family bathroom
- Mains gas central heating
- Communal gardens
- Semi rural position close to countryside walks
- Within walking distance of village amenities
- Easy M5 motorway access



Would you like to have a look?
Contact our Cullompton office
01884 32100
cullompton@seddons.com

Watch the Video Tour

Offering high ceilings and character features, this stone built Grade II Listed mill cottage offers light and spacious accommodation in an idyllic position bordering open countryside. No onward chain.



The Property

This charming character cottage is situated within the grounds of Coldharbour Mill, one of the best preserved textile mills in the country. The communal gardens border the mill leat and the property is in a quiet position on the edge of Uffculme, with riverside walks close by.

An entrance hallway provides access with large under stairs storage cupboard. This leads to a light and spacious dual aspect living/dining room with views out over the gardens, high ceilings and large sash windows.

The kitchen is fitted with solid wood shaker style units with integrated appliances and solid wood work surfaces.

Upstairs on the first floor there is a large dual aspect double bedroom with large sash windows providing open views and an ornate Georgian style fireplace with mantle piece, high ceilings and decorative period features.

There is a modern bathroom fitted with a white suite.

On the top floor is a spacious double bedroom with exposed painted timber beams and large sash window. There are two storage cupboards with additional eaves storage.

Outside the property is accessed via wrought iron entrance gates leading into a paved walled courtyard. Beyond this are attractive areas of lawned communal gardens, bordering the mill leat with areas to sit out and a washing line for laundry.

Agents note: there is a right of access through the courtyard for neighbouring properties. There are no communal charges for the gardens & residents maintain this themselves.

The property is wonderfully situated, in a tranquil setting at the bottom of Coldharbour. Uffculme offers popular local amenities including a primary school and the renowned, Ofsted rated 'Outstanding' secondary school, Uffculme School. There is a local pub, 'The Ostler', a mini-market, doctors' surgery, veterinary practice, a large village hall and community playing fields.



Regular bus services run through the village and the market towns of Tiverton and Cullompton are a short drive away. Via the motorway, Exeter and Taunton are within easy reach.

Utilities Mains gas, electricity, water & drainage

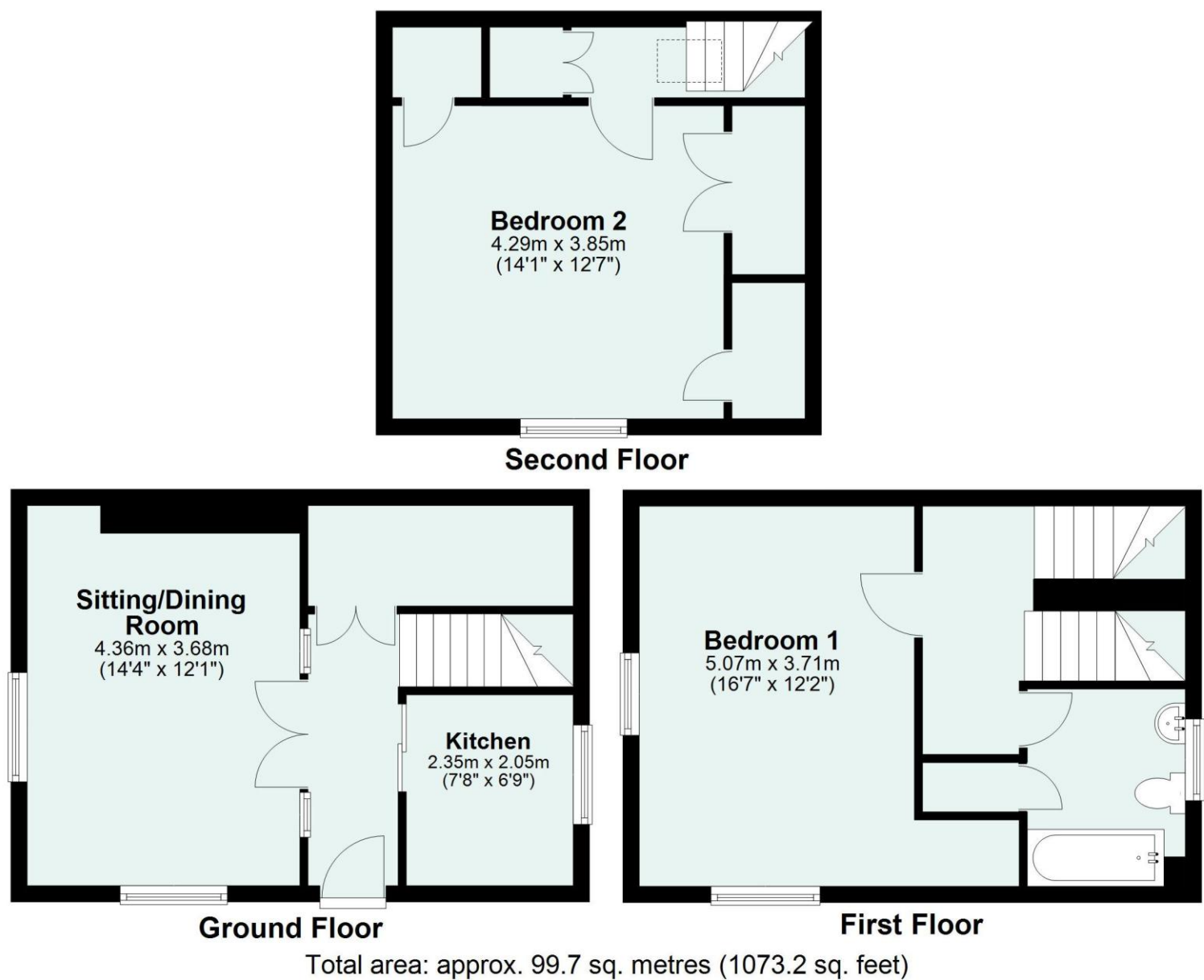
Tenure Freehold

Council Tax Band A - Local Authority: Mid Devon District Council

Please see the floor plan for the dimensions. The internal photos have been taken with a wide-angle lens to show more of the rooms.

Energy Performance Certificate (EPC)

Energy Efficiency Rating		
	Current	Potential
Very energy efficient - lower running costs		
(92+) A		
(81-91) B		81
(69-80) C		
(55-68) D		
(39-54) E	51	
(21-38) F		
(1-20) G		
Not energy efficient - higher running costs		
England, Scotland & Wales	EU Directive 2002/91/EC	



Need some advice?

If you are wondering what your property would sell or let for, we would be pleased to help.

Mortgage required?

Simply contact your local office to arrange a meeting with our friendly mortgage advisor.



Whilst every attempt is made to ensure our sales particulars are fair and accurate, they are only a general guide to the property and must not be relied on. Please qualify any specific points of interest with Seddons.