

12 Middlemead Road
Tiverton, Devon, EX16 6AZ

£365,000
Guide Price



EPC C





- 3 Bedrooms
- Off road parking
- Log burner
- Large garden
- Edge of town
- Character
- Conservatory
- Garage
- Store
- Outlook



Would you like to have a look?

Contact our Tiverton office

01884 253500

tiverton@seddons.com

1930s 3 bedroom semi-detached house with a large garden, garage, parking and plenty of character 🤍

Enjoy the cosy log burner after an evening outside on the decking, taking in the views across Devon.



The Property

12 Middlemead Road presents an attractive opportunity for buyers seeking a charming 1930's semi-detached property with character in a highly sought-after location. This 3-bedroom home is in lovely condition, offering comfortable family living spaces, a well-maintained garden, convenient proximity to town amenities and schools with potential to extend into the loft space.

Situated in a popular and desired close, 12 Middlemead Road boasts a prime location that offers both convenience and a peaceful residential atmosphere. Residents can enjoy the benefits of being within walking distance to the town centre and local schools, making it an ideal choice for families.

The property retains its character and charm from the 1930s era, evident in details such as picture rails and a log burner in the lounge. This adds a unique and inviting atmosphere to the home.

The kitchen has been thoughtfully opened up to create an open-plan kitchen/diner, complete with a centre island. This bright and airy space flows seamlessly into the attached conservatory, which currently serves as a spacious utility area with a convenient downstairs W/C. The flexibility of this space allows for various uses to suit the needs of the occupants.

The conservatory leads to a well-maintained decked area that offers stunning views and overlooks the expansive rear garden. The garden itself is a standout feature, boasting mature trees, shrubs, and even a grapevine. A garden shed and secure storage area located at the rear of the garage provide ample space for garden equipment and storage needs.

Upstairs, the property continues to impress with a beautifully spacious landing in keeping with the 1930s style. There are two generously sized double bedrooms positioned from front to rear and a comfortable single room, making this house an ideal choice for families in need of multiple bedrooms.

At the front of the property, there is a gravelled area, adding to the property's curb appeal. The long driveway leads to the garage, providing ample off-road parking space.

12 Middlemead Road, Tiverton, is a well-maintained and characterful 1930s semi-detached property with substantial living spaces and a lovely garden. Its prime location within walking distance to town and schools, combined with its charming features, make it a highly desirable family home.

The open-plan kitchen/diner and conservatory extension add modern functionality to this character-rich property. Lots of storage, double glazing, gas fired central heating and hot water. This home presents a fantastic opportunity for those seeking a family residence with both character and convenience.

Utilities

Mains gas, electric, water and drainage

Council Tax

Band D

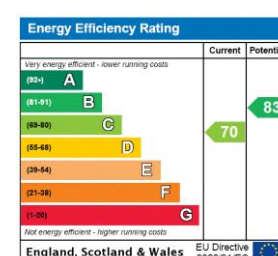
Directions

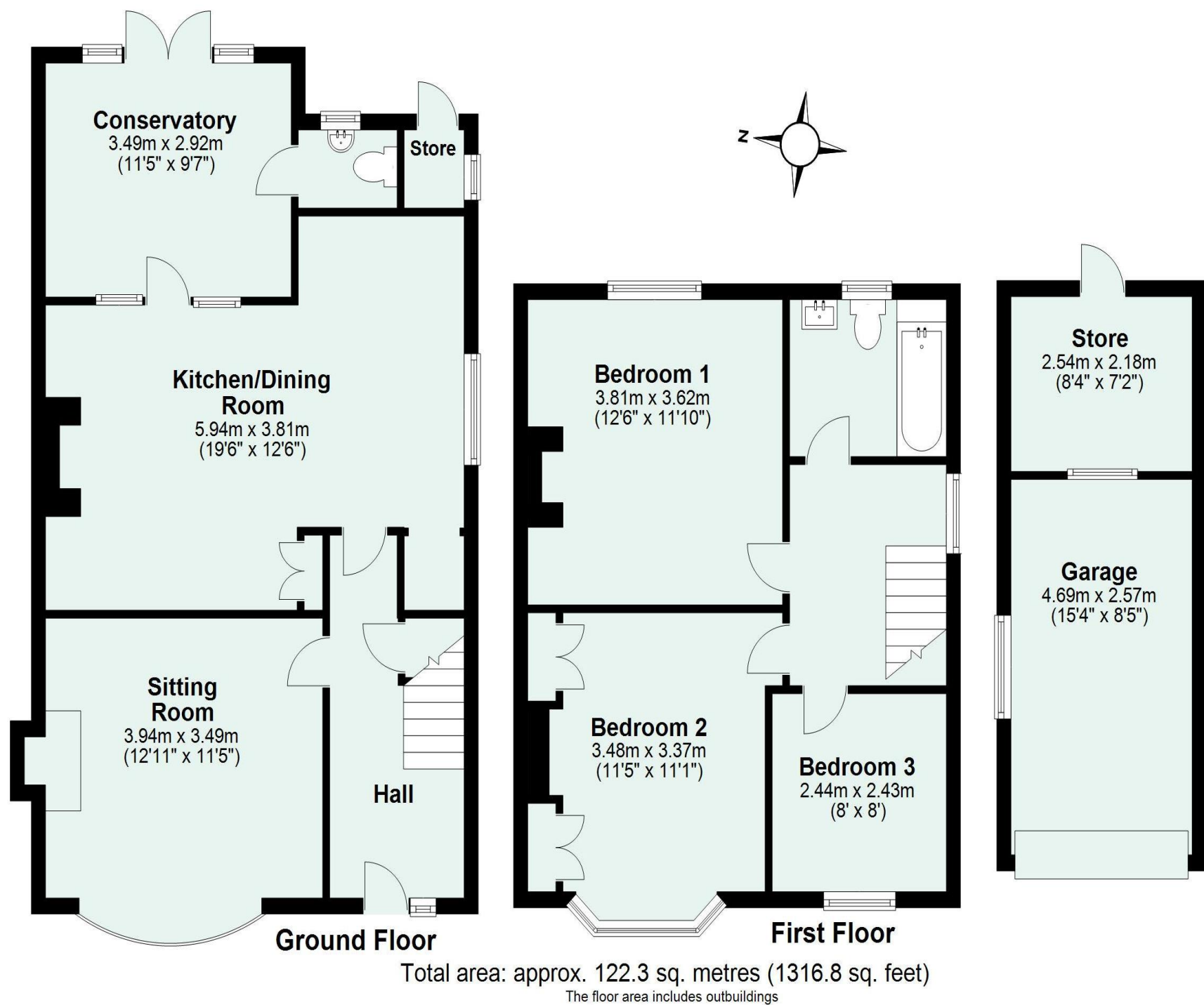
What3words - ship.plot.noses

Google Plus Code - WG68+53

Long/Lat - 50.910522, -3.484816

Energy Performance Certificate (EPC)





Need some advice?

If you are wondering what your property would sell or let for, we would be pleased to help.

Mortgage required?

Simply contact your local office to arrange a meeting with our friendly mortgage advisor.



Whilst every attempt is made to ensure our sales particulars are fair and accurate, they are only a general guide to the property and must not be relied on. Please qualify any specific points of interest with Seddons.