

10 Moore Drive
Tiverton, Devon, EX16 4FU

£379,950
Guide Price



 4  2  2 **EPC B**





- NO ONWARD CHAIN
- Detached
- 4 Bedrooms
- Kitchen/diner
- Cloakroom
- Large garage
- Driveway
- Upgrades
- NHBC Warranty
- Open views



Would you like to have a look?

Contact our Tiverton office

01884 253500

tiverton@seddons.com

A fresh and classy detached, 4-bedroom house that has the benefit of upgrades like, quality flooring, efficient lighting throughout and an upgraded bathroom.



The Property

Key Features:

- Modern, contemporary, Detached, 4-bedroom house that has the benefit of having upgrades like, quality flooring, efficient lighting throughout and an upgraded bathroom.
- Ready to Move In: No onward chain.
- Location: Set back from the main street, a five-minute drive to the town centre and within walking distance to Tiverton golf course.

Living Room:

- Light and spacious with views not hindered by neighbouring property.

Kitchen:

- Considerable size with access through patio doors to the rear garden.
- Fitted kitchen with ample storage, brand new integral dishwasher, a fridge freezer, double electric oven, and gas hob with extractor.

Bedrooms:

- 4 bedrooms.
- Master bedroom with en-suite.

Bathroom:

Part of the upgrades on this house is the tiled bathroom with a large, heated towel rail, a full-length bath and shower over.

Outside:

- Driveway and large garage: A long driveway, suitable for multiple vehicles leading to the Brick garage with an attractive, hip styled roof.

- Front Garden: Laid to grass with shrub borders.
- Rear Garden: Mainly laid to lawn with a level patio, convenient access to the garage and kitchen.

Additional Information:

Tiverton is a popular town with easy access to the M5, Tiverton train Station and amenities.

Moore Drive is located within a short distance to popular walks and cycle rides, including locations like the Grand Western Canal, Tiverton railway line, and a short distance to Exmoor via the beautiful Exe Valley and River Exe with traditional country inns along the way.

Tenure: Freehold
Local Authority: MDDC

Utilities

Mains electric, gas, water and drainage

Council Tax

Band D

Directions

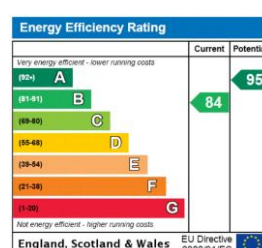
Google maps link-
<https://maps.app.goo.gl/962kwNyuf4mGRHZK9>

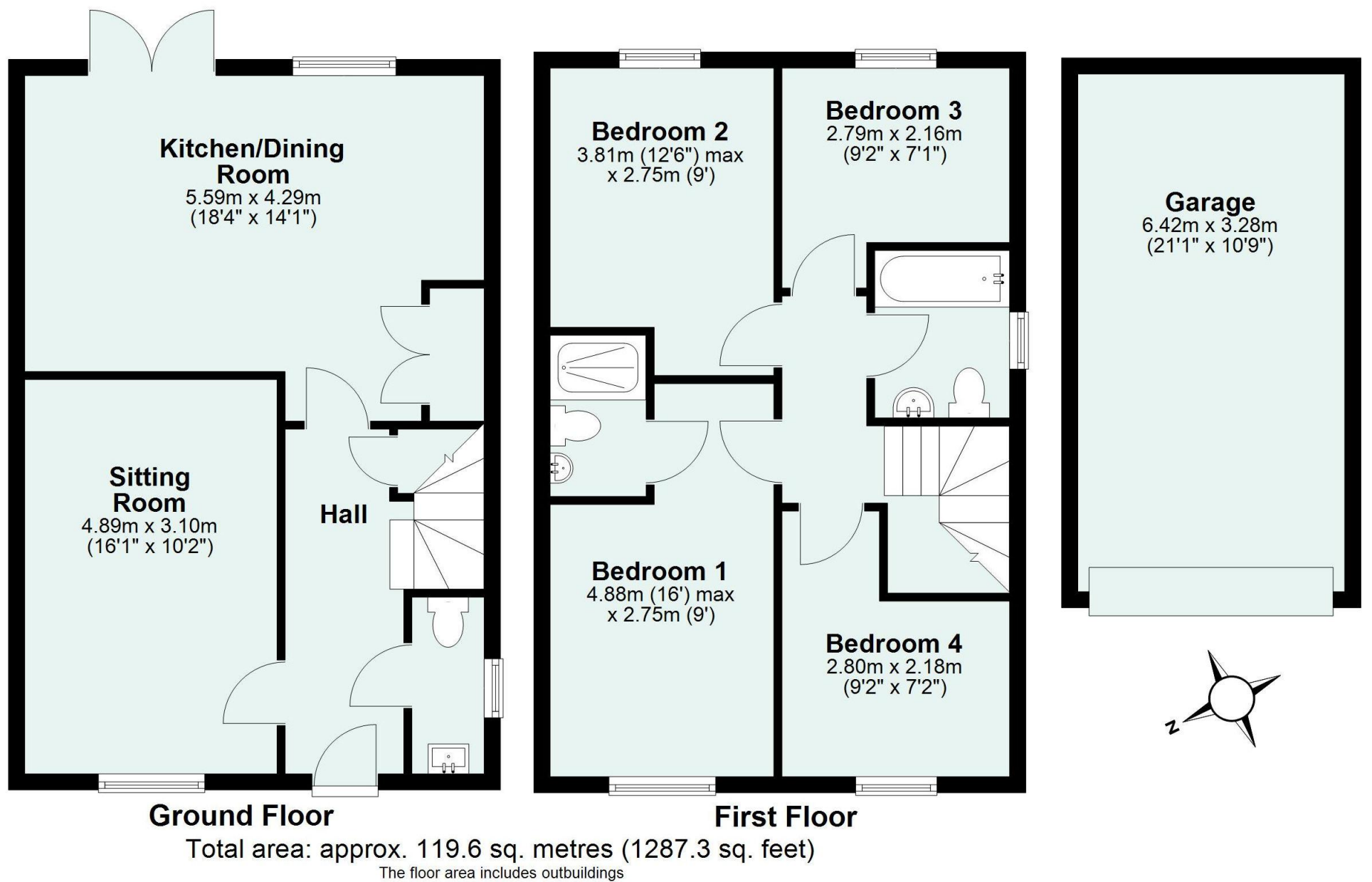
Google Plus code -
WH74+PVM Tiverton

What3words - ///scored.appealing.hype

Lat/Long - 50°54'51.7"N 3°26'34.2"W

Energy Performance Certificate (EPC)





Need some advice?

If you are wondering what your property would sell or let for, we would be pleased to help.

Mortgage required?

Simply contact your local office to arrange a meeting with our friendly mortgage advisor.



Whilst every attempt is made to ensure our sales particulars are fair and accurate, they are only a general guide to the property and must not be relied on. Please qualify any specific points of interest with Seddons.