

16 Cromwell Park

Tiverton, Devon, EX16 4QL

£380,000

Guide Price



 5

 1

 4

EPC D





- Kitchen/Dining Room
- Utility
- Sitting Room
- 4 Bedrooms
- Separate Guest suite
- 4 Bathrooms
- Newly renovated
- Off road parking
- Quiet location



Would you like to have a look?

Contact our Tiverton office

01884 253500

tiverton@seddons.com

Move right in! This completely renovated 5-bedroom, modern home boasts 4 bedrooms and a guest suite with off road parking.



The Property

Positioned in a private, quiet location, on the edge of town and within walking distance to the picturesque, Grand Western Canal lies 16 Cromwell Park.

This beautifully renovated property has been carefully designed to the highest standards, every room has been decorated and updated, including a new Benchmark kitchen with integrated fridge/freezer, double oven and electric hob.

A large, light and airy sitting room is accessed from the entrance hall and exits through to the kitchen/Dining room which continues on, through a door to the Utility, Cloakroom and side door exit.

The updated guest room which includes an en-suite bathroom has also had new certified electrics.

The main bedroom, and bedroom two, are both spacious doubles with en-suite bathrooms incorporating double shower units.

Bedrooms three and four are double bedrooms and conveniently separated by the main family bathroom which are accessed by the open wide landing area.

The property benefits from having new carpets and flooring throughout, three new ensuite bathrooms, a new family bathroom and ground floor toilet.

Outside, to the rear of the house is a low maintenance space, designed to be very low maintenance with shrubs a masonry landscape.

This area would not be suitable for disabled access or people with limited movement due to the tiered design.

To the side, there is a good level area, perfect for barbeques and socialising. There is a block build storage shed; stone build walls topped off with fencing to provide extra privacy.

Parking for two cars at the front on a wide driveway alongside a lawned front garden.

Utilities

Mains electric, gas, water and drainage

Tenure

Freehold

Local Authority

MDDC – 01884 255 255

Council Tax

Band D

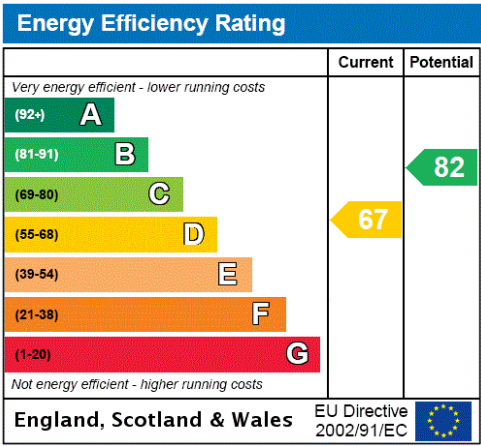
Directions

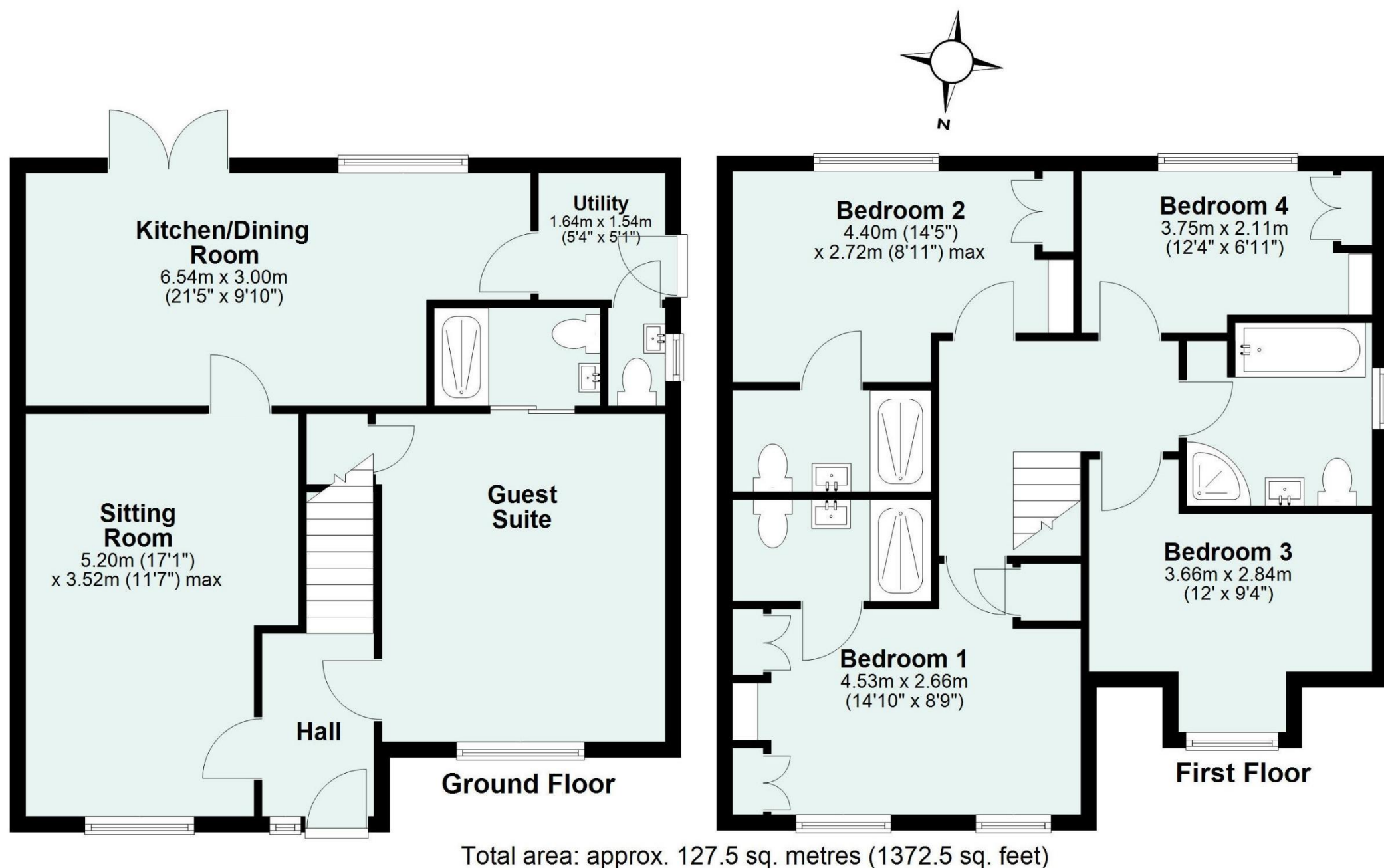
What3words - grades.daily.survey

Google Plus Code - VGXP+2Q

Lat/Long - 50.897617, -3.463040

Energy Performance Certificate (EPC)





Need some advice?

If you are wondering what your property would sell or let for, we would be pleased to help.

Mortgage required?

Simply contact your local office to arrange a meeting with our friendly mortgage advisor.



Whilst every attempt is made to ensure our sales particulars are fair and accurate, they are only a general guide to the property and must not be relied on. Please qualify any specific points of interest with Seddons.